



erwin Data Intelligence Suite

Release Notes

Release v11.0

Legal Notices

This Documentation, which includes embedded help systems and electronically distributed materials (hereinafter referred to as the Documentation), is for your informational purposes only and is subject to change or withdrawal by Quest Software, Inc and/or its affiliates at any time. This Documentation is proprietary information of Quest Software, Inc and/or its affiliates and may not be copied, transferred, reproduced, disclosed, modified or duplicated, in whole or in part, without the prior written consent of Quest Software, Inc and/or its affiliates

If you are a licensed user of the software product(s) addressed in the Documentation, you may print or otherwise make available a reasonable number of copies of the Documentation for internal use by you and your employees in connection with that software, provided that all Quest Software, Inc and/or its affiliates copyright notices and legends are affixed to each reproduced copy.

The right to print or otherwise make available copies of the Documentation is limited to the period during which the applicable license for such software remains in full force and effect. Should the license terminate for any reason, it is your responsibility to certify in writing to Quest Software, Inc and/or its affiliates that all copies and partial copies of the Documentation have been returned to Quest Software, Inc and/or its affiliates or destroyed.

TO THE EXTENT PERMITTED BY APPLICABLE LAW, QUEST SOFTWARE, INC. PROVIDES THIS DOCUMENTATION AS IS WITHOUT WARRANTY OF ANY KIND, INCLUDING WITHOUT LIMITATION, ANY IMPLIED WARRANTIES OF MERCHANTABILITY, FITNESS FOR A PARTICULAR PURPOSE, OR NONINFRINGEMENT. IN NO EVENT WILL QUEST SOFTWARE, INC. BE LIABLE TO YOU OR ANY THIRD PARTY FOR ANY LOSS OR DAMAGE, DIRECT OR INDIRECT, FROM THE USE OF THIS DOCUMENTATION, INCLUDING WITHOUT LIMITATION, LOST PROFITS, LOST INVESTMENT, BUSINESS INTERRUPTION, GOODWILL, OR LOST DATA, EVEN IF QUEST SOFTWARE, INC. IS EXPRESSLY ADVISED IN ADVANCE OF THE POSSIBILITY OF SUCH LOSS OR DAMAGE.

The use of any software product referenced in the Documentation is governed by the applicable license agreement and such license agreement is not modified in any way by the terms of this notice.

The manufacturer of this Documentation is Quest Software, Inc and/or its affiliates Provided with Restricted Rights. Use, duplication or disclosure by the United States Government is subject to the restrictions set forth in FAR Sections 12.212, 52.227-14, and 52.227-19(c)(1) - (2) and DFARS Section 252.227-7014(b)(3), as applicable, or their successors.

Copyright© 2021 Quest Software, Inc. and/or its affiliates All rights reserved. All trade-marks, trade names, service marks, and logos referenced herein belong to their respective companies.

Contact erwin

Understanding your Support

Review [support maintenance programs and offerings](#).

Registering for Support

Access the [erwin support](#) site and click Sign in to register for product support.

Accessing Technical Support

For your convenience, erwin provides easy access to "One Stop" support for [erwin Data Intelligence Suite \(DI Suite\)](#), and includes the following:

- Online and telephone contact information for technical assistance and customer services
- Information about user communities and forums
- Product and documentation downloads
- erwin Support policies and guidelines
- Other helpful resources appropriate for your product

For information about other erwin products, visit <http://erwin.com/>.

Provide Feedback

If you have comments or questions, or feedback about erwin product documentation, you can send a message to distechpubs@erwin.com.

erwin Data Modeler News and Events

Visit www.erwin.com to get up-to-date news, announcements, and events. View video demos and read up on customer success stories and articles by industry experts.

Contents

Legal Notices	2
Contents	5
What's New	6
Dashboards	6
Enterprise Tags	8
Association Using Qualifiers	8
Improved AIMatch Engine	9
Productivity Enhancements	9
Multi-Asset Mind Maps	10
Business Asset Search	10
Business and Technical Asset Sharing	11
UI Facelift	12
Foreign Language (i18N) Support	13
XSD and JSON Scanner	13
Framework for ETL/SQL Mapping Documentation	13

What's New

The latest erwin Data Intelligence Suite (DI Suite) version, v11.0, has the following new features:

[Dashboards](#)

[Enterprise Tags](#)

[Association Using Qualifiers](#)

[Improved AIMatch Engine](#)

[Productivity Enhancements](#)

[Foreign Language \(i18N\) Support](#)

[XSD and JSON Scanner](#)

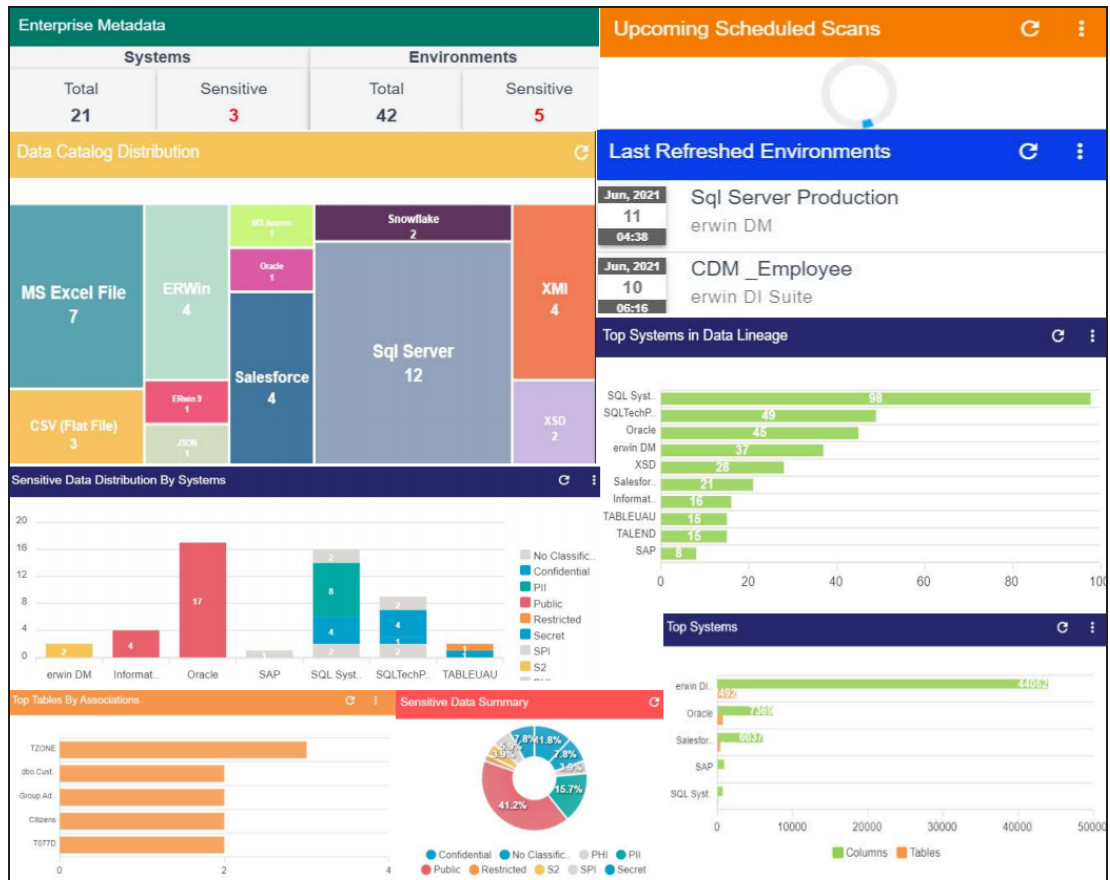
[Framework for ETL/SQL Mapping Documentation](#)

The following sections explain each feature in brief. For detailed information about features, refer to the [Detailed Features List](#).

Dashboards

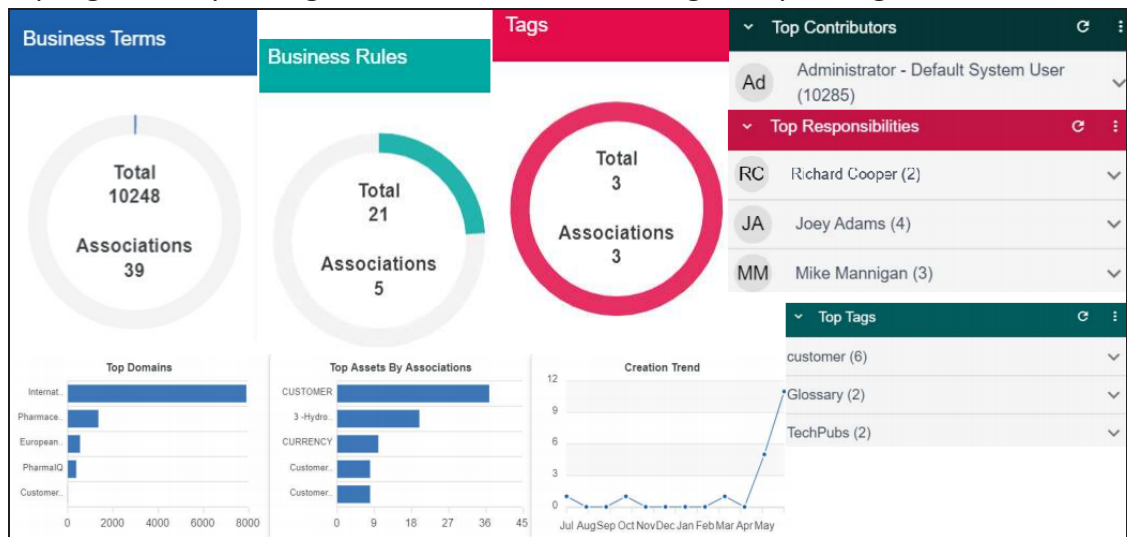
erwin DI Suite now comes with configurable dashboards that provide you the visibility to understand, find, and govern your data. Configure them to display data that matters to you and drill down into details of each piece of information. You can view the dashboards at,

- The [Data Catalog Dashboard](#) in the Metadata Manager displays information of technical assets, data catalog, top technical assets in data lineage, sensitive data summary, upcoming scheduled scans, and more.



- The [Data Literacy Dashboard](#) in the Business Glossary Manager displays information of business assets based on creation of trends, associations, and domains. It further demonstrates a summary of top contributors, top responsibilities, and

top tags across your organization from the business glossary manager.



Enterprise Tags

erwin DI Suite now offers [enterprise tagging](#) for all business assets. Enterprise tags enable you to classify and organize business assets into categories. Thus, speeding up data discovery. Create a centralized enterprise tags list or create them on the fly.

DATA INTELLIGENCE SUITE

Enterprise Tags

?

Tags Listing

#	Name	Description	Associatio	Public	Scope	Options			
	<div></div>	<div></div>							
1	Address_1		0	<div>ON</div>	Business Rule	<div></div>	<div></div>	<div></div>	<div></div>
2	Agriculture		1	<div>ON</div>	Business Rule	<div></div>	<div></div>	<div></div>	<div></div>
3	Benefits		2	<div>ON</div>	Business Term	<div></div>	<div></div>	<div></div>	<div></div>
4	consumer		1	<div>ON</div>	Business Term	<div></div>	<div></div>	<div></div>	<div></div>

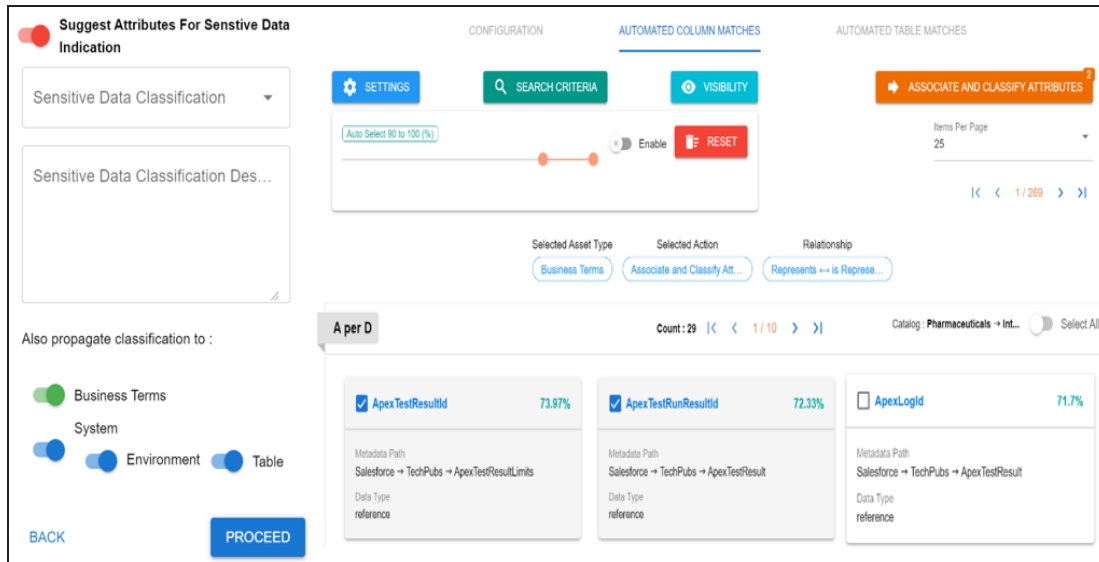
Association Using Qualifiers

erwin DI Suite now enables you to associate [business assets](#) and [technical assets](#) based on a unique qualifier. This capability enables you to generate a mind map based on associations

that are uniquely identified by a business or technical asset.

Improved AIMatch Engine

The improved [AIMatch engine](#) includes parsing in NLP across column definition, logical name, expanded logical name, and comments in its algorithm to provide more accurate matches and efficient asset discovery. In addition, it enables you to detect, flag, and link sensitive data to technical assets using GDPR, CCPA, and other compliance templates.



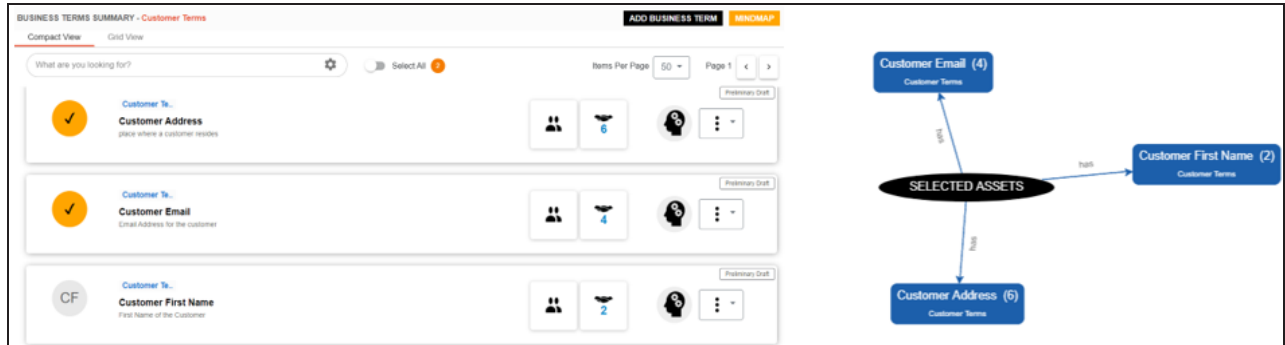
Productivity Enhancements

Apart from the full features, erwin DI Suite comes packed with several enhancements that offer improved user experience and work efficiency:

- [Multi-Asset Mind Maps](#)
- [Business Asset Search](#)
- [Business and Technical Asset Sharing](#)
- [UI Facelift](#)

Multi-Asset Mind Maps

You can now select multiple business assets and generate [mind maps](#).



Business Asset Search

You can now [search business assets](#) across or within catalogs and narrow down the results further using the search and filter options. Thus, improving asset accessibility.

Filter

Save As View

Explore Custom Views

Search Options

☒ Asset Name

☐ Asset Definition

Filter Options

☐ Show Published Assets Only

☐ By Sensitivity

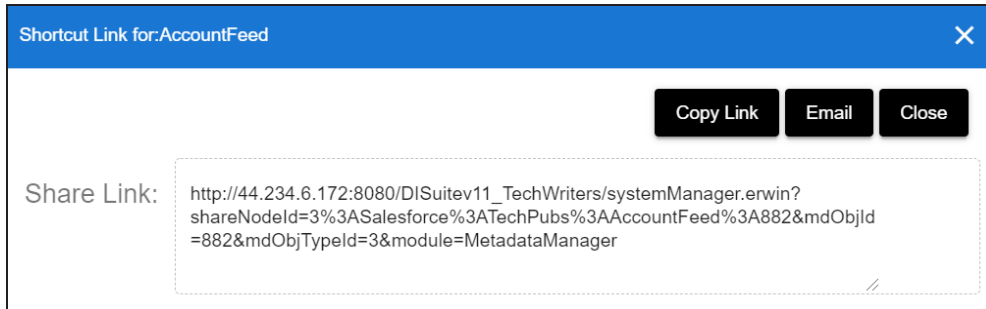
Sensitive Data Indicator(SDI) Classification ▼

☐ By Tag

Tags ▼

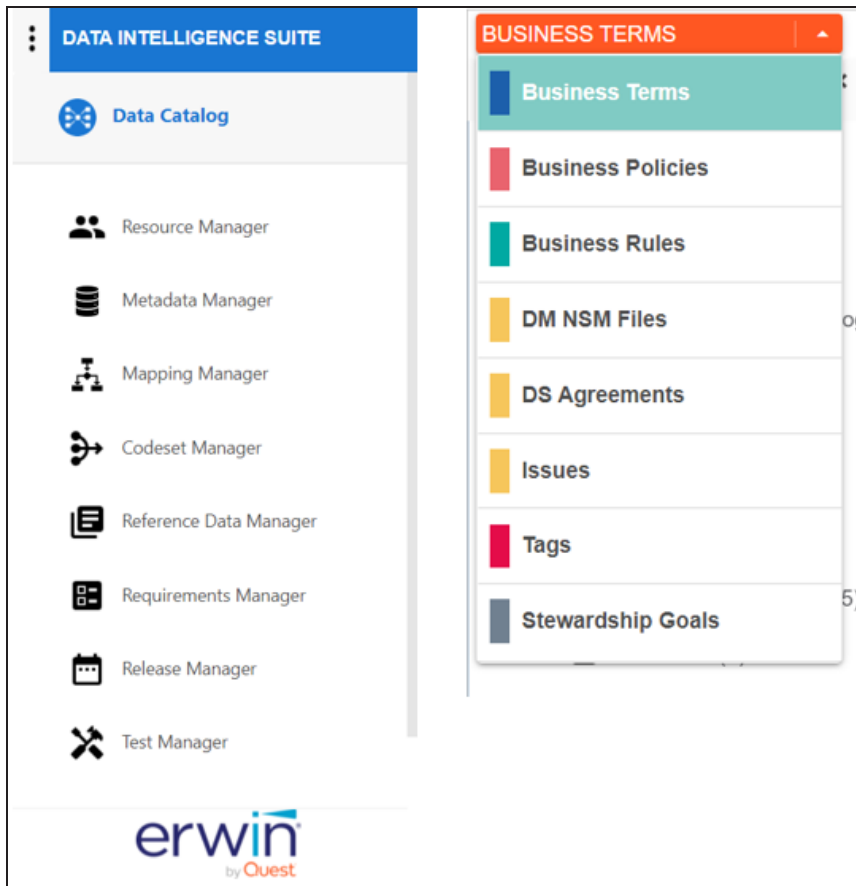
Business and Technical Asset Sharing

You can now share shortcut links of [business assets](#) and [technical assets](#) with anyone via an email or a medium of your choice.



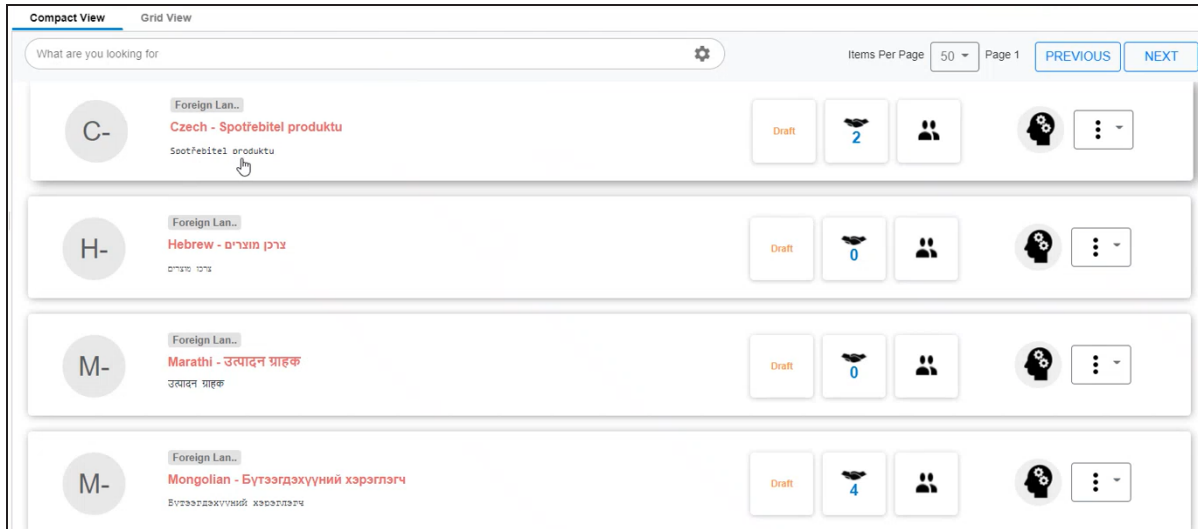
UI Facelift

erwin DI Suite offers an improved user experience with its redesigned application menu and overall asset navigation.



Foreign Language (i18N) Support

erwin DI Suite offers i18N support that provides multiple language support for SQL Server. You can now capture technical and business assets in a language that works for you.



XSD and JSON Scanner

erwin DI Suite now has XSD and JSON Scanners:

- **XSD Scanner:** It enables you to drag and drop the inner table as a column for hierarchical database types.
- **JSON Scanner:** It enables you to scan multiple ZIP files and update JSON Physical Table and Column Name.

Framework for ETL/SQL Mapping Documentation

erwin DI Suite now includes framework to supports multi-components for ETL/SQL Mapping Documentation.